



Let **UK** Home

1 Bedrooms

Flat

Located
in Dagenham

£280,000



info@letukhome.co.uk

<https://www.letukhome.co.uk/>

01795 358 886



Kent Avenue Dagenham

RM9 6PE



Let UK Home are excited to offer this brand new one bedroom apartment in The Empire, part of The Empire.

The flat comprises a spacious open kitchen with a stylishly attached dining area, a magnificent living room leading to a private balcony, one bright bedroom with built-in wardrobe and one modern bathroom.

Dagenham Green is an inspiring new vision for the future of this vibrant and diverse East London community. Imagine a place with everything you need: a resident's concierge, gardens, a park and boardwalk, shops, a school, a social hub, cafés and 5-acres of green space in production. Dagenham Green will offer just that – a whole neighbourhood for you to enjoy.

Within reach of the development itself, Dagenham Green boasts excellent facilities, including:

- Merrilands Retail Park
- Dagenham Leisure Park
- ABC pre-school
- Goresbrook Park
- Old Dagenham Park
- Marsh Green Primary School
- Dagenham Park Church of England Secondary School
- Eastbrook Studios

Venturing further afield, Lakeside Shopping Centre is just a few minutes away by

Kent Avenue Dagenham

£280,000 Freehold

- 2nd Floor
- 24h Security
- Close to Local Shops
- Private Balcony
- Concierge Service
- Bike Storage
- Close to Transport Links



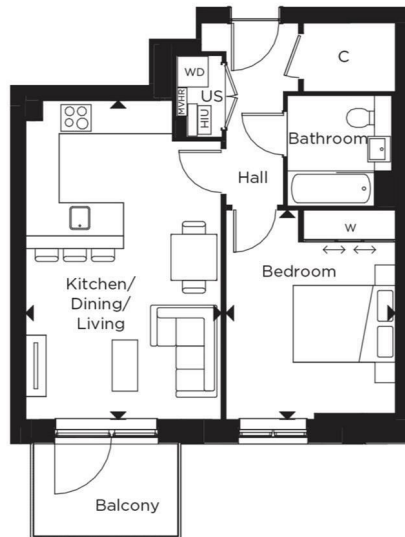


Let **UK** Home

3F 2 Eastbourne Terrace
 Paddington
 London
 W2 6LG

01795 358 886

info@letukhome.co.uk



2nd Floor | One Bedroom

Total Area
 51.4 sq m | 553.3 sq ft

Balcony Area
 4.9 sq m

Kitchen/Dining/Living
 3.85m x 6.25m | 12'7" x 20'5"

Bedroom
 3.30m x 4.10m | 10'10" x 13'5"

Floorplan layouts are not to scale, provide approximate measurements only and are subject to planning. Dimensions, which are taken from the indicated points of measurements are for guidance only and are not intended to be used for window treatments or items of furniture. Bathroom and kitchen layouts are indicative only and are subject to change. Wardrobe size and position may vary. Affordable housing is indicative and can

Council Tax Band: New Build

Local Authority:

Agents Note: Whilst every care has been taken to prepare these particulars, they are for guidance purposes only. All measurements are approximate and are for general guidance purposes only and whilst every care has been taken to ensure their accuracy, they should not be relied upon and potential buyers/tenants are advised to recheck the measurements.

Energy Efficiency Rating		Current	Potential
Very energy efficient - lower running costs			
(92 plus) A			
(81-91) B			
(69-80) C			
(55-68) D			
(39-54) E			
(21-38) F			
(1-20) G			
Not energy efficient - higher running costs			
England & Wales	EU Directive 2002/91/EC		

<https://www.letukhome.co.uk/>